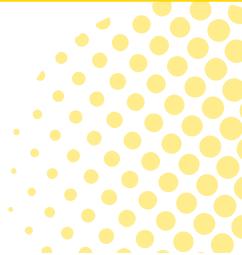


MOBILE CAMERA & LIGHT MASTS

SB6- SIMPLE



The Simple series is characterized by its simple design and is one of the most affordable video surveillance towers in our range.

Despite the low-cost design, all other details remain at the usual high level.

The Simple series is equipped without a roof. It is also optionally available with a connectable roof. (SB6-Simple Plus).

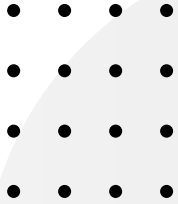
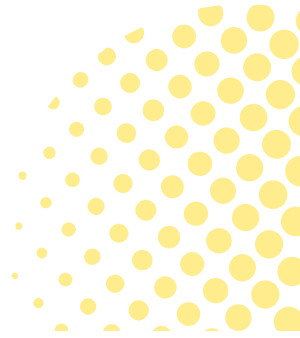
The Securitbox provides ample space for your electronic devices.

All our models already have an integrated integrated climbing protection.

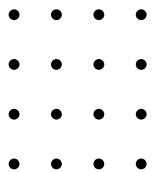


Mobile security, redefined

TECHNICAL INFORMATION



- Box Size L/W/H 100 × 100 × 230 + - cm
- Mast Dimensions size: 120 × 100 × 80 × 60 cm
- Manual CE approved hand winch 900 KG
- Hot-dip galvanized telescopic mast
- Maximum load capacity 65 KG on the mast
- Steel construction, 100% hot-dip galvanized
- Doors and walls galvanized and electrostatic paint
- Maximum height up to 6 meters
- Total weight +/- 310 KG Empty
- 2 boxes stackable on top of each other, space-saving
- Equipped with forklift pockets and crane eyes on all 4 sides,
- Easy transport with forklift, crane, or trailer
- Equipped with 4 extendable stabilizers (feet)
- Telescopic mast with safety bolts
- 4 steel cables to stabilize the mast
- Cable drag chain closed on one side.



WWW.SECURITBOX.COM

INFO :

- The technical equipment is not included in the price.
- All series are available with perfectly matching control cabinets.